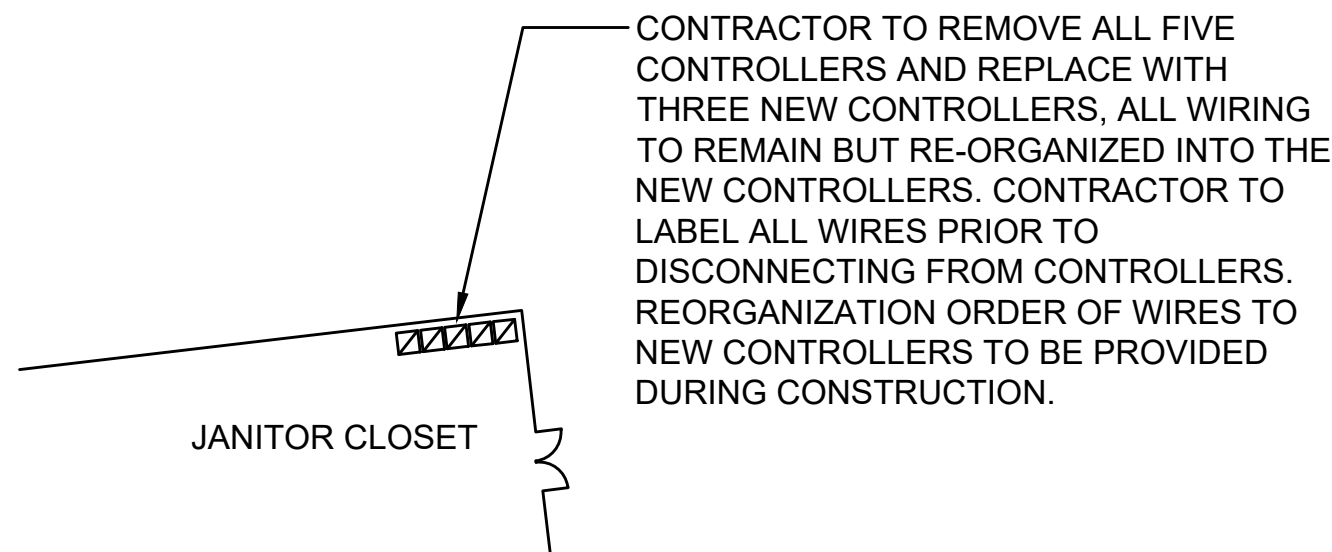


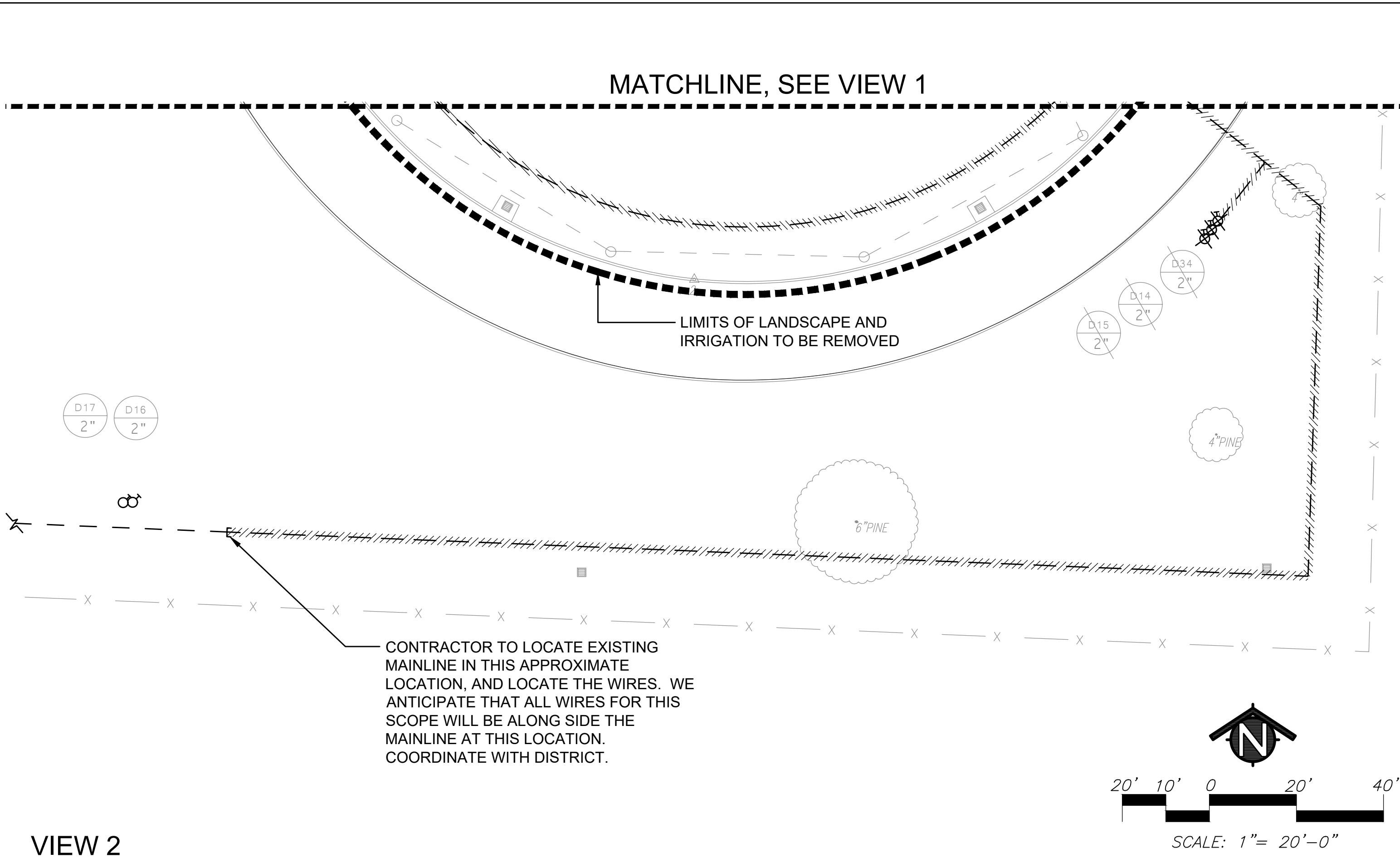
KEY	IRRIGATION DEMOLITION LEGEND
	EXISTING TREE TO REMAIN
	LIMITS OF LANDSCAPE AND IRRIGATION TO BE REMOVED
	CONTRACTOR TO REMOVE ALL VEGETATION (GRASS/WEEDS/ETC) FROM THE FIELD SURFACE DOWN TO AN 1" HEIGHT OR LESS. ONCE THE VEGETATION HAS BEEN REMOVED, PULVERIZE THE REMAINING ORGANIC MATTER INTO THE TOP 8" OF SOIL.
	EXISTING AUTOMATIC CONTROL VALVE TO REMAIN
	EXISTING AUTOMATIC CONTROL VALVE TO BE REMOVED
	EXISTING IRRIGATION MAINLINE TO REMAIN
	EXISTING IRRIGATION MAINLINE TO BE ABANDONED
	EXISTING LATERAL LINE TO BE ABANDONED
	EXISTING IRRIGATION HEAD TO BE REMOVED
	VALVE IDENTIFICATION - VALVE TO REMAIN
	VALVE IDENTIFICATION - VALVE TO BE REMOVED

PRE-CONSTRUCTION SPRINKLER IRRIGATION NOTES

- PRIOR TO START OF CONSTRUCTION CONTRACTOR REQUIRED TO CONTACT:  
NAME, TITLE: ALAIN CONTRERAS  
PHONE NUMBER: 530-304-4056  
TO SET UP A MEETING ON SITE TO OPERATE THE EXISTING SPRINKLER IRRIGATION SYSTEM AND DISCUSS THE MODIFICATIONS THAT ARE TO BE MADE TO THE EXISTING SYSTEM TO ACCOMMODATE FOR THE NEW CONSTRUCTION.
- CONTRACTOR TO OPERATE AND PROGRAM EXISTING SPRINKLER IRRIGATION SYSTEM THAT IS TO REMAIN IN ORDER TO PROVIDE WATER TO THE EXISTING LANDSCAPE TO REMAIN.
- CONTRACTOR TO REMOVE ALL EXISTING PIPE AND SPRINKLER HEADS WHEN THEY ARE IN NEW PLANTING AREAS.
- CONTRACTOR TO RESTORE AND REPAIR ANY EXISTING SPRINKLER IRRIGATION SYSTEM OR EXISTING LANDSCAPE WHICH IS IN AREAS TO REMAIN THAT IS DAMAGED BY NEW WORK.
- ALL WORK TO EXISTING SPRINKLER IRRIGATION SYSTEM TO BE COMPLETED PRIOR TO SITE DEMOLITION.



VIEW 3



VIEW 2



**MTW**group  
LANDSCAPE ARCHITECTURE  
AND PLANNING  
2707 K Street, Suite 201  
Sacramento, CA 95816  
916.369.3990



Peter D. Larimer C-5284

The Landscape Architects do not represent that these plans or the specifications to construction thereto are suitable, whether or not modified for any other site than the one for which they were specifically prepared. The Landscape Architects disclaim responsibility for these plans and specifications if they are used in whole or in part at any other site.

CONSULTANTS

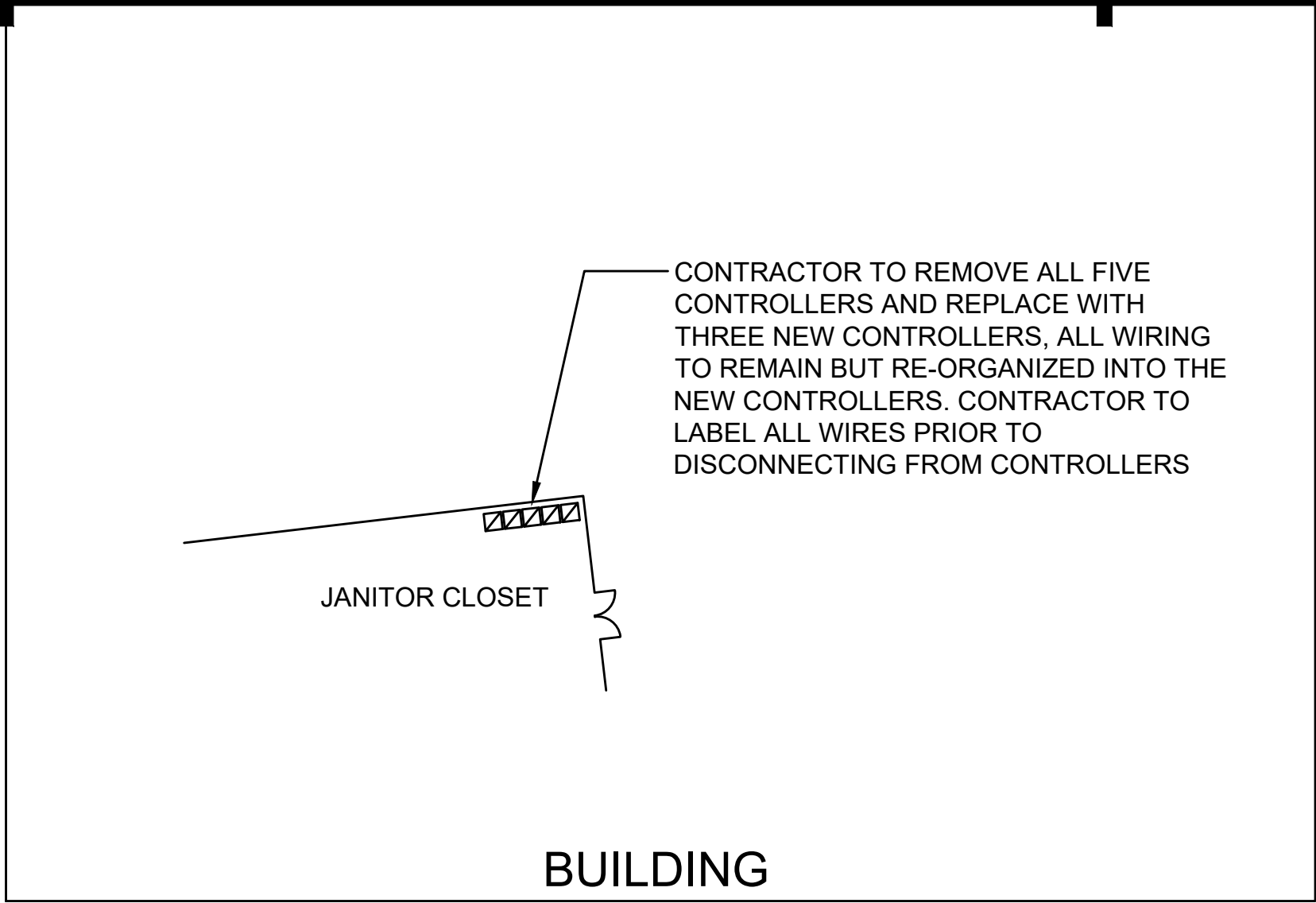
REVISIONS		
NO.	DESCRIPTION	DATE
1	ADDENDUM 1	09/30/22

INITIAL BOX			
NO.	DWG BY	DATE	REVIEWED

HARPER JUNIOR HIGH SCHOOL  
PLAYFIELD RENOVATIONS  
DAVIS JOINT UNIFIED SCHOOL DISTRICT  
DAVIS, CA

DATE	09/12/22
JOB NO.	21-67
SHEET TITLE	DEMOLITION PLAN

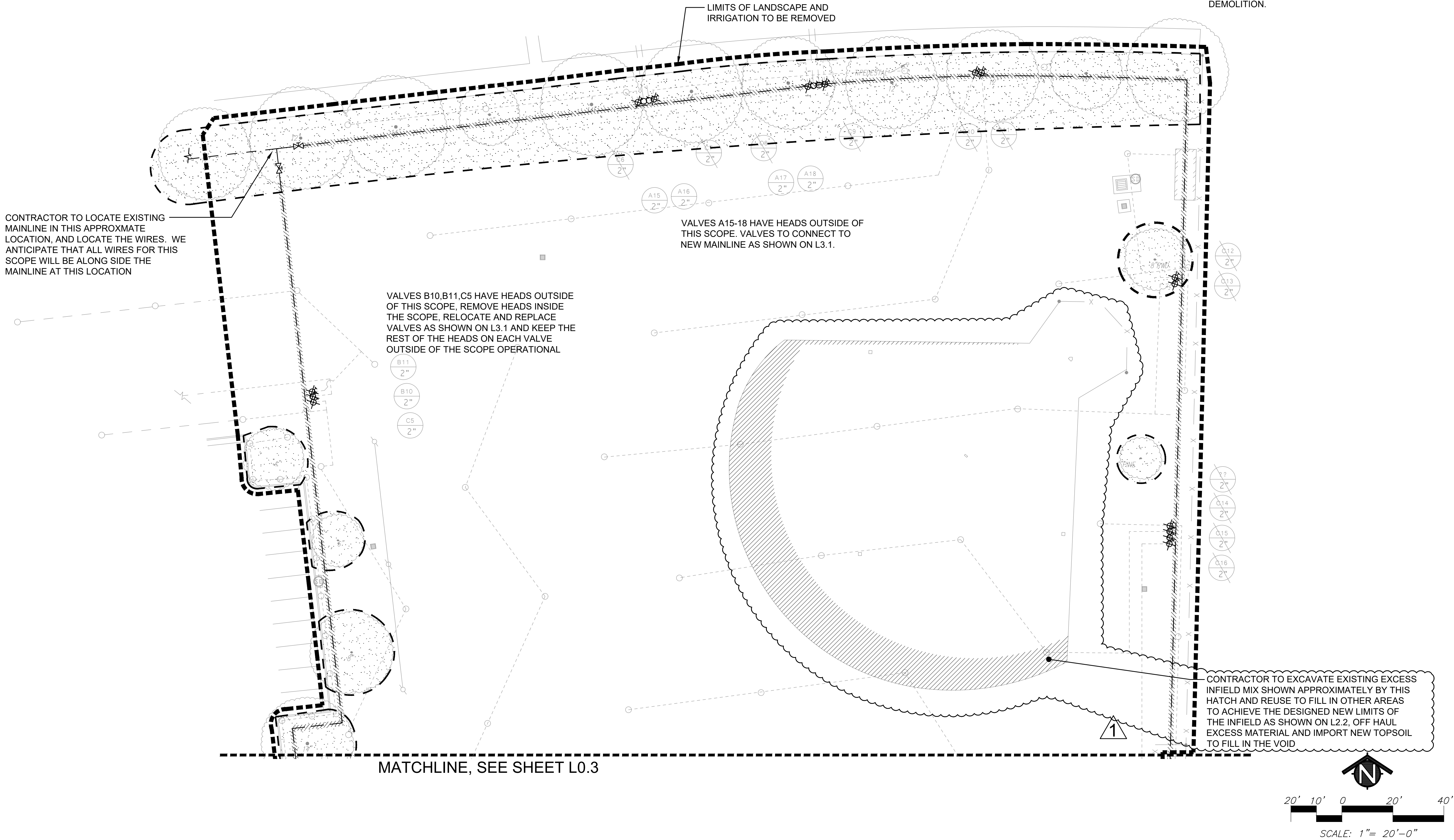
BASE BID
SHEET NO.
L0.1
SHEET 2 OF 22 TOTAL



KEY	IRRIGATION DEMOLITION LEGEND
	EXISTING TREE TO REMAIN
	LIMITS OF LANDSCAPE AND IRRIGATION TO BE REMOVED
	CONTRACTOR TO REMOVE ALL VEGETATION (GRASS/WEEDS/ETC) FROM THE FIELD SURFACE DOWN TO AN 1" HEIGHT OR LESS. ONCE THE VEGETATION HAS BEEN REMOVED, PULVERIZE THE REMAINING ORGANIC MATTER INTO THE TOP 8" OF SOIL.
	EXISTING AUTOMATIC CONTROL VALVE TO REMAIN
	EXISTING AUTOMATIC CONTROL VALVE TO REMOVE
	EXISTING IRRIGATION MAINLINE TO REMAIN
	EXISTING IRRIGATION MAINLINE TO BE ABANDONED
	EXISTING LATERAL LINE TO BE ABANDONED
	EXISTING IRRIGATION HEAD TO REMOVE
	VALVE IDENTIFICATION - VALVE TO REMAIN
	VALVE IDENTIFICATION - VALVE TO BE REMOVED
	EXISTING TREE PROTECTION AREA: SEE TREE PROTECTION SPECIFICATIONS AND DETAILS L4.3-1 AND 2

PRE-CONSTRUCTION SPRINKLER IRRIGATION NOTES

- PRIOR TO START OF CONSTRUCTION CONTRACTOR REQUIRED TO CONTACT:  
NAME, TITLE: ALAIN CONTRERAS  
PHONE NUMBER: 530-304-4056  
TO SET UP A MEETING ON SITE TO OPERATE THE EXISTING SPRINKLER IRRIGATION SYSTEM AND DISCUSS THE MODIFICATIONS THAT ARE TO BE MADE TO THE EXISTING SYSTEM TO ACCOMMODATE FOR THE NEW CONSTRUCTION.
- CONTRACTOR TO OPERATE AND PROGRAM EXISTING SPRINKLER IRRIGATION SYSTEM THAT IS TO REMAIN IN ORDER TO PROVIDE WATER TO THE EXISTING LANDSCAPE TO REMAIN.
- CONTRACTOR TO REMOVE ALL EXISTING PIPE AND SPRINKLER HEADS WHEN THEY ARE IN NEW PLANTING AREAS.
- CONTRACTOR TO RESTORE AND REPAIR ANY EXISTING SPRINKLER IRRIGATION SYSTEM OR EXISTING LANDSCAPE WHICH IS IN AREAS TO REMAIN THAT IS DAMAGED BY NEW WORK.
- ALL WORK TO EXISTING SPRINKLER IRRIGATION SYSTEM TO BE COMPLETED PRIOR TO SITE DEMOLITION.



CONSULTANTS

REVISIONS

NO.	DESCRIPTION	DATE
1	ADDENDUM 1	09/30/22

INITIAL BOX

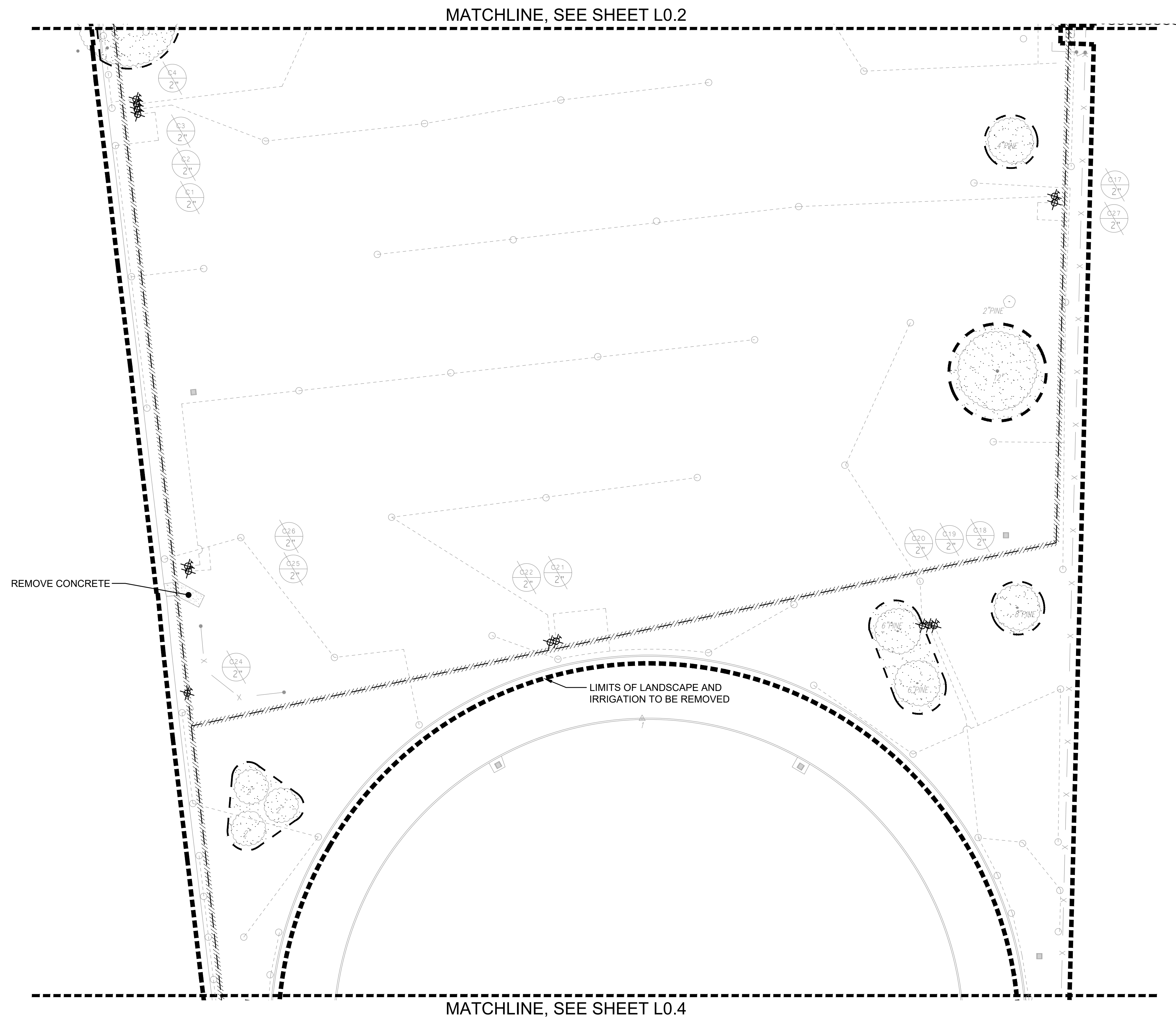
NO.	DWG BY	DATE	REVIEWED

HARPER JUNIOR HIGH SCHOOL  
PLAYFIELD RENOVATIONS  
DAVIS JOINT UNIFIED SCHOOL DISTRICT  
DAVIS, CA

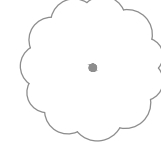


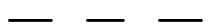







DATE	09/12/22
JOB NO.	21-67
SHEET TITLE	

DEMOLITION PLAN

ADD ALTERNATE #1	
SHEET NO.	



KEY

IRRIGATION DEMOLITION LEGEND

EXISTING TREE TO REMAIN

LIMITS OF LANDSCAPE AND IRRIGATION TO BE REMOVED

CONTRACTOR TO REMOVE ALL VEGETATION (GRASS/WEEDS/ETC) FROM THE FIELD SURFACE DOWN TO AN 1" HEIGHT OR LESS. ONCE THE VEGETATION HAS BEEN REMOVED, PULVERIZE THE REMAINING ORGANIC MATTER INTO THE TOP 8" OF SOIL.

EXISTING AUTOMATIC CONTROL VALVE TO REMAIN

EXISTING AUTOMATIC CONTROL VALVE TO REMOVE

EXISTING IRRIGATION MAINLINE TO REMAIN

EXISTING IRRIGATION MAINLINE TO BE ABANDONED

EXISTING LATERAL LINE TO BE ABANDONED

EXISTING IRRIGATION HEAD TO REMOVE

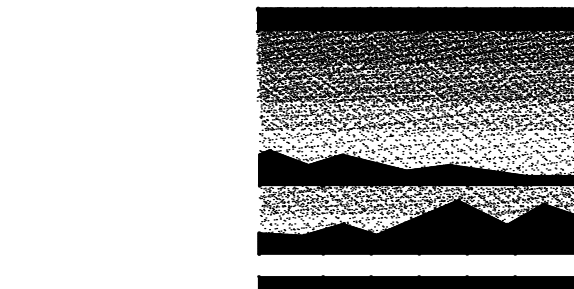
VALVE IDENTIFICATION - VALVE TO REMAIN

VALVE IDENTIFICATION - VALVE TO BE REMOVED

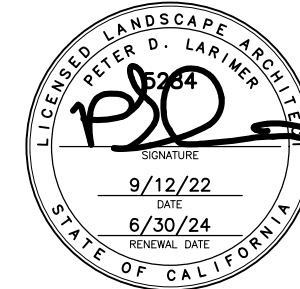
EXISTING TREE PROTECTION AREA:  
SEE TREE PROTECTION SPECIFICATIONS AND DETAILS L4.3-1 AND 2

PRE-CONSTRUCTION SPRINKLER IRRIGATION NOTES

- PRIOR TO START OF CONSTRUCTION CONTRACTOR REQUIRED TO CONTACT:  
NAME, TITLE: ALAIN CONTRERAS  
PHONE NUMBER: 530-304-4056  
TO SET UP A MEETING ON SITE TO OPERATE THE EXISTING SPRINKLER IRRIGATION SYSTEM AND DISCUSS THE MODIFICATIONS THAT ARE TO BE MADE TO THE EXISTING SYSTEM TO ACCOMMODATE FOR THE NEW CONSTRUCTION.
- CONTRACTOR TO OPERATE AND PROGRAM EXISTING SPRINKLER IRRIGATION SYSTEM THAT IS TO REMAIN IN ORDER TO PROVIDE WATER TO THE EXISTING LANDSCAPE TO REMAIN.
- CONTRACTOR TO REMOVE ALL EXISTING PIPE AND SPRINKLER HEADS WHEN THEY ARE IN NEW PLANTING AREAS.
- CONTRACTOR TO RESTORE AND REPAIR ANY EXISTING SPRINKLER IRRIGATION SYSTEM OR EXISTING LANDSCAPE WHICH IS IN AREAS TO REMAIN THAT IS DAMAGED BY NEW WORK.
- ALL WORK TO EXISTING SPRINKLER IRRIGATION SYSTEM TO BE COMPLETED PRIOR TO SITE DEMOLITION.



**MTW** *group*  
LANDSCAPE ARCHITECTURE  
AND PLANNING  
2707 K Street, Suite 201  
Sacramento, CA 95816  
916.369-3990



Peter D. Larimer C-5284

The Landscape Architects do not represent that these plans or the specifications to construction hereafter are suitable, whether or not modified for any other site than the one for which they were specifically prepared. The Landscape Architects disclaim responsibility for these plans and specifications if they are used in whole or in part at any other site.

CONSULTANTS

REVISIONS

NO.	DESCRIPTION	DATE
1	ADDENDUM 1	09/30/22

INITIAL BOX

NO.	DWG BY	DATE	REVIEWED

HARPER JUNIOR HIGH SCHOOL  
PLAYFIELD RENOVATIONS  
DAVIS JOINT UNIFIED SCHOOL DISTRICT  
DAVIS, CA

DATE 09/12/22

JOB NO. 21-67

SHEET TITLE

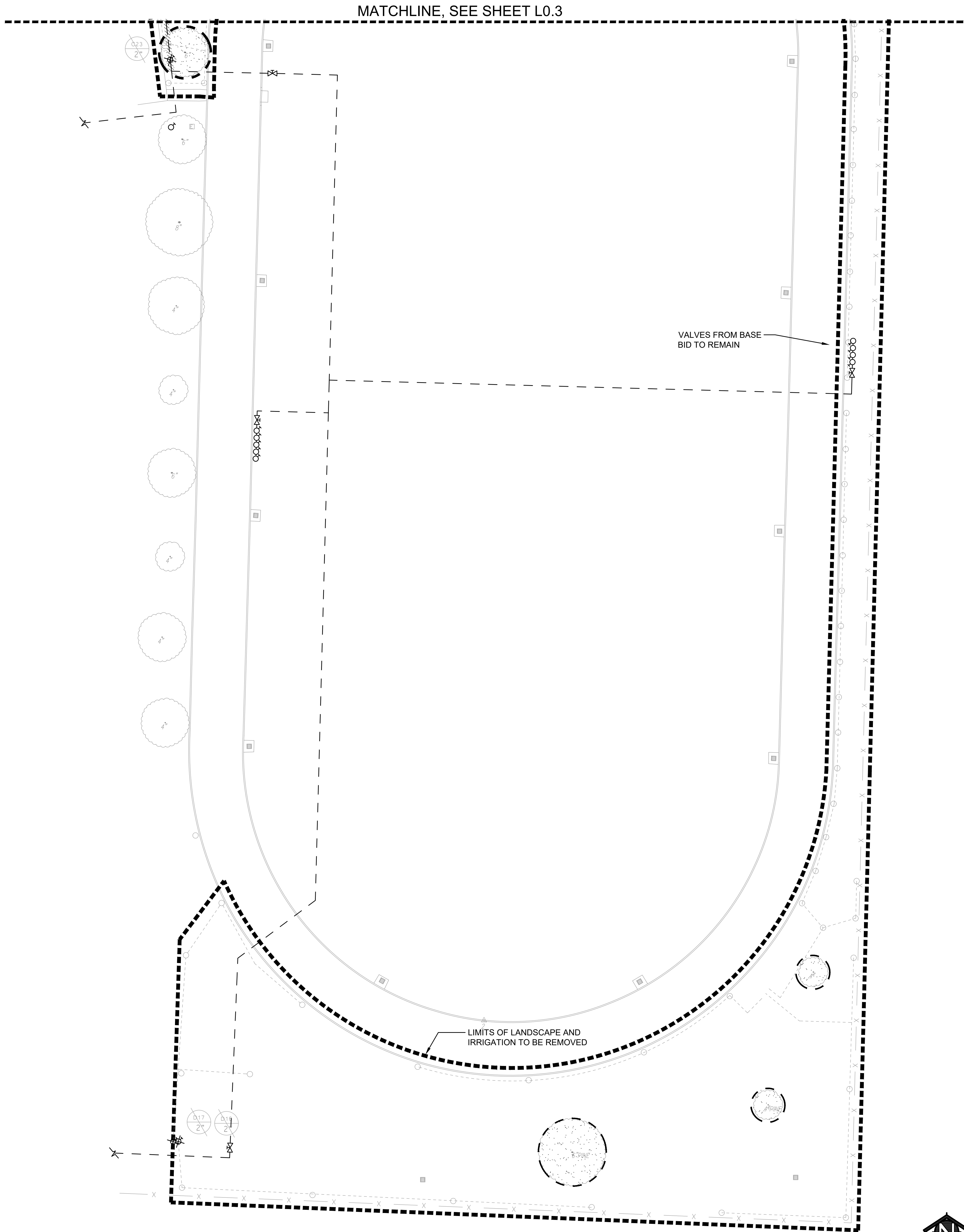
DEMOLITION PLAN

ADD ALTERNATE #1

SHEET NO.

L0.3

SHEET 9 OF 22 TOTAL



**KEY**

**IRRIGATION DEMOLITION LEGEND**

EXISTING TREE TO REMAIN

LIMITS OF LANDSCAPE AND IRRIGATION TO BE REMOVED

CONTRACTOR TO REMOVE ALL VEGETATION (GRASS/WEEDS/ETC) FROM THE FIELD SURFACE DOWN TO AN 1" HEIGHT OR LESS. ONCE THE VEGETATION HAS BEEN REMOVED, PULVERIZE THE REMAINING ORGANIC MATTER INTO THE TOP 8" OF SOIL.

EXISTING AUTOMATIC CONTROL VALVE TO REMAIN

EXISTING AUTOMATIC CONTROL VALVE TO REMOVE

EXISTING IRRIGATION MAINLINE TO REMAIN

EXISTING IRRIGATION MAINLINE TO BE ABANDONED

EXISTING LATERAL LINE TO BE ABANDONED

EXISTING IRRIGATION HEAD TO REMOVE

VALVE IDENTIFICATION - VALVE TO REMAIN

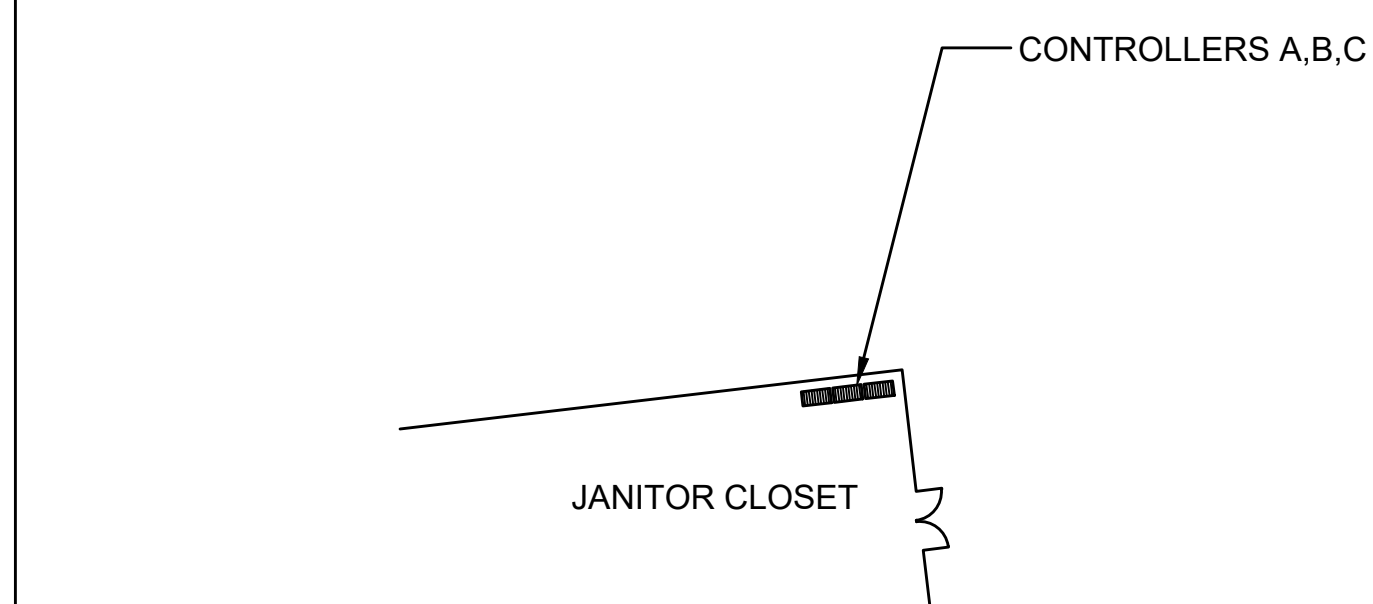
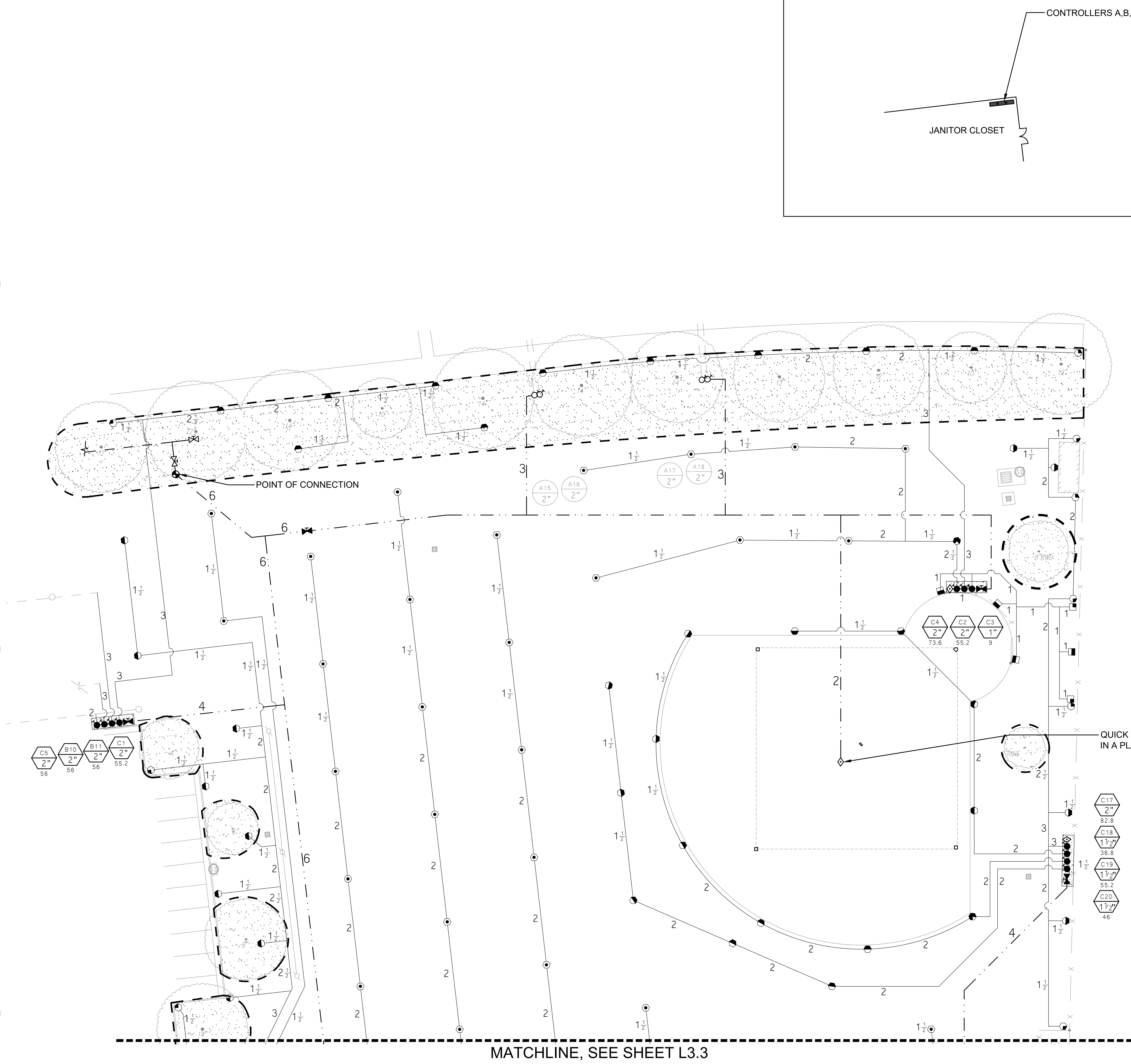
VALVE IDENTIFICATION - VALVE TO BE REMOVED

**EXISTING TREE PROTECTION AREA:**  
SEE TREE PROTECTION SPECIFICATIONS AND DETAILS L4.3-1 AND 2

- PRE-CONSTRUCTION SPRINKLER IRRIGATION NOTES**
- PRIOR TO START OF CONSTRUCTION CONTRACTOR REQUIRED TO CONTACT:  
NAME, TITLE: ALAIN CONTRERAS  
PHONE NUMBER: 530-304-4056  
TO SET UP A MEETING ON SITE TO OPERATE THE EXISTING SPRINKLER IRRIGATION SYSTEM AND DISCUSS THE MODIFICATIONS THAT ARE TO BE MADE TO THE EXISTING SYSTEM TO ACCOMMODATE FOR THE NEW CONSTRUCTION.
  - CONTRACTOR TO OPERATE AND PROGRAM EXISTING SPRINKLER IRRIGATION SYSTEM THAT IS TO REMAIN IN ORDER TO PROVIDE WATER TO THE EXISTING LANDSCAPE TO REMAIN.
  - CONTRACTOR TO REMOVE ALL EXISTING PIPE AND SPRINKLER HEADS WHEN THEY ARE IN NEW PLANTING AREAS.
  - CONTRACTOR TO RESTORE AND REPAIR ANY EXISTING SPRINKLER IRRIGATION SYSTEM OR EXISTING LANDSCAPE WHICH IS IN AREAS TO REMAIN THAT IS DAMAGED BY NEW WORK.
  - ALL WORK TO EXISTING SPRINKLER IRRIGATION SYSTEM TO BE COMPLETED PRIOR TO SITE DEMOLITION.

REVISIONS		
NO.	DESCRIPTION	DATE
1	ADDENDUM 1	09/30/22

INITIAL BOX			
NO.	DWG BY	DATE	REVIEWED

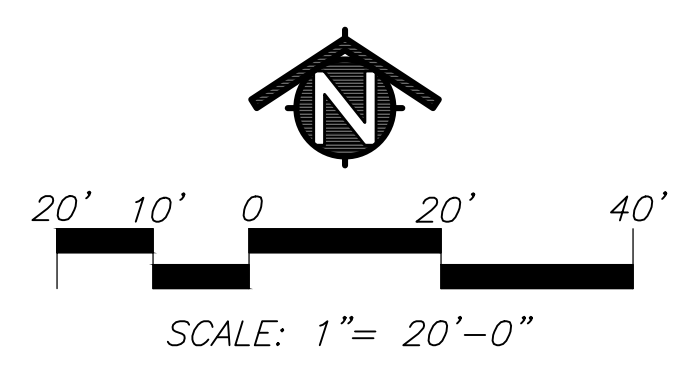


KEY SPRINKLER IRRIGATION LEGEND

- POINT OF CONNECTIONS:**  
IRRIGATION SYSTEM OPERATING WATER PRESSURE: 110 PSI  
MAXIMUM FLOW IS 102 GPM  
CONTRACTOR SHALL LOCATE EXISTING IRRIGATION MAINLINE AT APPROXIMATE LOCATION SHOWN  
CONNECT AT THIS POINT AND EXTEND AS INDICATED ON DRAWINGS.
- GATE VALVE:**  
TYPE:  
LEEMCO LMV-XXFF FLANGED WITH A NON-RISING STEM AND OPERATING NUT.  
GATE VALVE INSTALLED IN A VALVE BOX WITH TOP OF BOX SET FLUSH TO FINISH GRADE.  
GATE VALVE TO BE LINE SIZE.
- PRESSURE MAIN LINE:**  
TYPE:  
3" SIZE AND SMALLER: ASTM D1785, PVC SCHEDULE 40.  
(LEEMCO PIPE-TO-PIPE RESTRAINT IS NOT NEEDED FOR SCH 40 PIPES.)  
4" SIZE AND LARGER: ASTM D2241 SDR 21, 200 PSI, RUBBER GASKETED WITH LEEMCO JOINT RESTRAINTS  
TRENCH DEPTH:  
IN PLANTED AREAS: 24" MINIMUM COVER  
UNDER PAVED AREAS: 24" MINIMUM COVER  
PVC SCHEDULE 40 SLEEVES ARE REQUIRED FOR ALL PIPING UNDER PAVEMENT.
- LATERAL LINE:**  
TYPE:  
ASTM D1785, PVC SCHEDULE 40, SOLVENT WELD ALL UNSIZED PIPE SHALL BE 1 1/2" SIZE.  
TRENCH DEPTH:  
IN PLANTED AREAS: 18" MINIMUM COVER  
UNDER PAVED AREAS: 24" MINIMUM COVER  
PVC SCHEDULE 40 SLEEVES ARE REQUIRED FOR ALL PIPING UNDER PAVEMENT.
- AUTOMATIC CONTROL VALVE:**  
HUNTER ICV WITH ADJUSTABLE ACCU SYNC
- QUICK COUPLER VALVE:**  
HUNTER HQ-44-LRC-R OR APPROVED EQUAL  
VALVES SHALL HAVE LOCKING RUBBER COVERS, INSTALLED IN VALVE BOXES. TOP OF VALVE BOX SHALL HAVE BOLT DOWN LG. AND TOP SET LEVEL TO FINISH GRADE.
- LAWN POP-UP ROTOR HEADS:**  
60 PSI, 9.2 GPM, 0.84 PRECIP Δ  
0.8 LT BROWN NOZZLE  
FULL CIRCLE  
HUNTER: I-40-06-SS-08  
THREE QUARTER  
HUNTER: I-40-06-SS-08  
HALF CIRCLE  
HUNTER: I-40-06-SS-08  
QUARTER CIRCLE  
HUNTER: I-40-06-SS-08
- LAWN POP-UP INTERMEDIATE ROTOR HEADS:**  
50 PSI, 1.5 GPM, 0.46 PRECIP Δ  
1.5 SR BLACK NOZZLE  
FULL CIRCLE  
HUNTER: I-20-06-SS-1.5SR  
THREE QUARTER  
HUNTER: I-20-06-SS-1.5SR  
HALF CIRCLE  
HUNTER: I-20-06-SS-1.5SR  
QUARTER CIRCLE  
HUNTER: I-20-06-SS-1.5SR
- INDICATES CONTROL VALVE AND STATION NUMBER**
- INDICATES CONTROL VALVE SIZE**
- INDICATES GALLONS PER MINUTE**
- EXISTING TREE PROTECTION AREA:**  
THE PROTECTION AREA UNDER ANY EXISTING TREE THAT IS TO REMAIN IS DEFINED BY ITS DRIP LINE OR CANOPY COVER. WITHIN THIS AREA NO STORAGE OR PARKING WILL BE PERMITTED. ALL TRENCHING WILL BE PERFORMED BY HAND. DO NOT CUT ROOTS 1" IN DIAMETER OR LARGER. USE BORING PROCEDURES WHEN ENCOUNTERING ROOTS 1" SIZE AND LARGER. NO ROOTS ARE TO BE EXPOSED LONGER THAN 48 HOURS.
- AUTOMATIC CONTROLLER:**  
RAINMASTER DXI CENTRAL CONTROL SYSTEM:  
CONTROLLER "A", "B", "C"  
DXI-FMW-LAGUNA + DXI-PWM48P - 48 STATION CONVENTIONAL  
WITH ETHERNET CONNECTION AND PROMAX REMOTE ASSEMBLY  
AND ANTENNA  
REUSE EXISTING 110V SERVICE.  
BUDGET 300' OF DATA LINE FROM CONTROLLER B AND C BACK TO THE IDF  
THROUGH EXISTING CONDUIT.  
EXTEND WIRE TO THE ROOF AND INSTALL NEW ANTENNAS ON THE ROOF.  
COORDINATE WITH DESIGN TEAM FOR TRANSFER STATION WIRES TO NEW CONTROLLERS

SPRINKLER IRRIGATION NOTES

- COMPOSITE BASE SHEET: PROPOSED IMPROVEMENTS SHOWN ON DRAWINGS ARE SUPERIMPOSED ON A COMPOSITE BASE SHEET. THE COMPOSITE BASE SHEET IS A COMPILED OF ARCHITECTURAL, ENGINEERING, AND OTHER DATA THAT IS PROVIDED. THE LANDSCAPE ARCHITECT SHALL NOT BE HELD LIABLE FOR CHANGES, INACCURACIES, OMISSIONS, OR ERRORS PERTAINING TO THE COMPOSITE BASE SHEET. CONTRACTOR SHALL BE RESPONSIBLE FOR REVIEWING THESE DOCUMENTS. ANY DISCREPANCIES NEED TO BE BROUGHT TO THE ATTENTION OF THE DESIGN TEAM AND RESOLVED PRIOR TO CONTINUATION OF WORK.
- DESIGN PRESSURE SHOWN ON PLANS HAS BEEN FURNISHED BY WATER COMPANY OR WATER DISTRICT SERVING SITE. VERIFY PRESSURE ON-SITE PRIOR TO THE INSTALLATION OF ANY SPRINKLER IRRIGATION EQUIPMENT. IF THERE IS A DISCREPANCY, NOTIFY OWNERS REPRESENTATIVE IMMEDIATELY IN WRITING SO ADJUSTMENTS CAN BE MADE BY LANDSCAPE ARCHITECT. FAILURE TO REPORT DISCREPANCIES AND CONTINUANCE OF WORK WILL RESULT IN ALL RE-DESIGN COSTS BEING CHARGED TO CONTRACTOR.
- DETERMINE LOCATION OF UNDERGROUND UTILITIES. DAMAGE CAUSED BY INSTALLATION OF THIS WORK SHALL BE REPAIRED TO SATISFACTION OF GOVERNING AGENCY OR OWNER AT NO ADDITIONAL COST TO THE CONTRACT.
- SPRINKLER OVER SPRAY SHALL NOT BE ALLOWED ON PUBLIC SIDEWALKS, BUILDING WALLS OR FENCES. MINIMUM OVERSPRAY MAY OCCUR IN PARKING AREAS. USE ADJUSTABLE NOZZLES WHENEVER POSSIBLE TO CONTROL SPRINKLER OVERSPRAY.
- ALL LOCAL CODES AND ORDINANCES SHALL BE COMPLIED WITH. IF THERE IS A CONFLICT, NOTIFY OWNERS REPRESENTATIVE IMMEDIATELY.
- TESTING:  
A. PRESSURE TEST ALL UNDERGROUND PIPING AS FOLLOWS:  
SYSTEMS WITH BOOSTER PUMP:  
MAIN LINE - AT 100 PSI FOR 4 HOURS.  
LATERAL LINES - AT 100 PSI FOR 2 HOURS.  
SYSTEMS WITH OUT BOOSTER PUMP:  
MAIN LINE - AT STATIC PSI FOR 4 HOURS.  
LATERAL LINES - AT STATIC PSI FOR 2 HOURS.  
B. COVERAGE TEST: NOTE: PRIOR TO REQUESTING COVERAGE TEST, INSURE ALL HEADS ARE SET PLUMB, NOZZLES ARE ADJUSTED PROPERLY AND SYSTEM HAS BEEN CHECKED FOR AUTOMATION. REQUEST OWNERS REPRESENTATIVES PRESENCE ON-SITE WHEN SPRINKLER SYSTEM IS COMPLETELY INSTALLED AND FULLY AUTOMATIC. PROVIDE ADEQUATE PERSONNEL AT THIS MEETING TO ADJUST AND FINE TUNE SYSTEM TO SATISFACTION OF OWNERS REPRESENTATIVE.
- LAYOUT ALL WORK PRIOR TO TRENCHING OPERATIONS TO DETERMINE IF MINOR MODIFICATIONS OR ADJUSTMENTS WILL BE REQUIRED.
- INSTALL ALL SPRINKLER HEADS PERPENDICULAR TO SLOPES OR GRADE.
- CONTROL WIRE SHALL BE UF-14, COLOR FOR LEAD AND WHITE FOR COMMON. SPLICES SHALL BE PERMITTED AT VALVE BOX LOCATIONS ONLY.
- PROVIDE AND INSTALL AUTOMATIC CONTROLLER AND UF-14 CONTROL WIRE. ELECTRICAL SUBCONTRACTOR SHALL PROVIDE 110V SERVICE AND SERVICE HOOKUP FROM POWER SOURCE TO AUTOMATIC CONTROLLER.
- COORDINATE ALL WORK WITH OTHER TRADES SO PROGRESS OF WORK IS NOT INTERRUPTED AND CAN BE COMPLETED IN A TIMELY MANNER.
- NO PLANTING SHALL BE STARTED UNTIL ALL SPRINKLER WORK HAS BEEN TESTED AND APPROVED IN PRESENCE OF OWNERS REPRESENTATIVE.
- FOR SPRINKLER IRRIGATION INSTALLATION DETAILS, SEE SHEET NO. L4-1.



**MTW group**  
LANDSCAPE ARCHITECTURE  
AND PLANNING  
2707 K Street, Suite 201  
Sacramento, CA 95816  
916.369.3990

Peter D. Larimer C-5284

The Landscape Architects do not represent that these plans or the specifications to construction thereof are suitable, whether or not modified for any other site than the one for which they were specifically prepared. The Landscape Architects disclaim responsibility for these plans and specifications if they are used in whole or in part at any other site.

CONSULTANTS

REVISIONS		
NO.	DESCRIPTION	DATE
1	ADDENDUM 1	09/30/22

INITIAL BOX			
NO.	DWG BY	DATE	REVIEWED

HARPER JUNIOR HIGH SCHOOL  
PLAYFIELD RENOVATIONS  
DAVIS JOINT UNIFIED SCHOOL DISTRICT  
DAVIS, CA

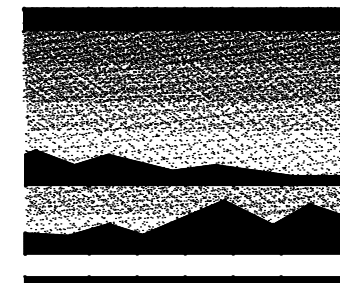
DATE	09/12/22
JOB NO.	21-67
SHEET TITLE	

LANDSCAPE  
IRRIGATION PLAN

ADD ALTERNATE #1  
SHEET NO.

L3.2

SHEET 17 OF 22 TOTAL



**MTW** *group*  
LANDSCAPE ARCHITECTURE  
AND PLANNING  
2707 K Street, Suite 201  
Sacramento, CA 95816  
916 369-3990



Peter D. Larimer

C-5284

The Landscape Architects do not represent that these plans or the specifications to construct therefrom are suitable, whether or not modified for any other use than the one for which they were specifically prepared. The Landscape Architects disclaim responsibility for these plans and specifications if they are used in whole or in part at any other site.

#### CONSULTANTS

#### REVISIONS

NO.	DESCRIPTION	DATE
1	ADDENDUM 1	09/30/22

#### INITIAL BOX

NO.	DWG BY	DATE	REVIEWED

HARPER JUNIOR HIGH SCHOOL  
PLAYFIELD RENOVATIONS  
DAVIS JOINT UNIFIED SCHOOL DISTRICT  
DAVIS, CA

DATE 09/12/22

JOB NO. 21-67

SHEET TITLE

LANDSCAPE  
IRRIGATION PLAN

ADD ALTERNATE #1

SHEET NO.

L3.3

SHEET 18 OF 22 TOTAL

#### KEY

#### SPRINKLER IRRIGATION LEGEND

##### POINT OF CONNECTIONS:

IRRIGATION SYSTEM OPERATING WATER PRESSURE: 110 PSI

MAXIMUM FLOW IS 102 GPM

CONTRACTOR SHALL LOCATE EXISTING IRRIGATION MAINLINE AT APPROXIMATE LOCATION SHOWN

CONNECT AT THIS POINT AND EXTEND AS INDICATED ON DRAWINGS.

##### GATE VALVE:

TYPE:

LEEMCO LMY-XXFF FLANGED WITH A NON-RISING STEM AND OPERATING NUT.

GATE VALVE INSTALLED IN A VALVE BOX WITH TOP OF BOX SET FLUSH TO FINISH GRADE.

GATE VALVE TO BE LINE SIZE.

##### PRESSURE MAIN LINE:

TYPE:

3" SIZE AND SMALLER: ASTM D1785, PVC SCHEDULE 40.

(LEEMCO PIPE-TO-PIPE RESTRAINT IS NOT NEEDED FOR SCH 40 PIPES.)

4" SIZE AND LARGER: ASTM D2241 SDR 21, 200 PSI, RUBBER GASKETED WITH LEEMCO JOINT RESTRAINTS

IN PLANTED AREAS: 24" MINIMUM COVER

UNDER PAVED AREAS: 24" MINIMUM COVER

PVC SCHEDULE 40 SLEEVES ARE REQUIRED FOR ALL PIPING UNDER PAVEMENT.

##### LATERAL LINE:

TYPE:

ASTM D1785, PVC SCHEDULE 40, SOLVENT WELD ALL UNSIZED PIPE SHALL BE 1 1/2" SIZE.

TRENCH DEPTH:

IN PLANTED AREAS: 18" MINIMUM COVER

UNDER PAVED AREAS: 24" MINIMUM COVER

PVC SCHEDULE 40 SLEEVES ARE REQUIRED FOR ALL PIPING UNDER PAVEMENT.

##### AUTOMATIC CONTROL VALVE:

HUNTER ICV WITH ADJUSTABLE ACCU SYNC

##### QUICK COUPLER VALVE:

HUNTER HO-44-LRC-R OR APPROVED EQUAL

VALVES SHALL HAVE LOCKING RUBBER COVERS, INSTALLED IN VALVE BOXES, TOP OF

VALVE BOX SHALL HAVE BOLT DOWN LID AND TOP SET LEVEL TO FINISH GRADE.

##### LAWN POP-UP ROTOR HEADS:

60 PSI, 9.2 GPM, 0.84 PRECIP/IN

08 1" BROWN NOZZLE

FULL CIRCLE

HUNTER: I-40-06-SS-08

THREE QUARTER

HUNTER: I-40-06-SS-08

HALF CIRCLE

HUNTER: I-40-06-SS-08

QUARTER CIRCLE

HUNTER: I-40-06-SS-08

##### LAWN POP-UP INTERMEDIATE ROTOR HEADS:

50 PSI, 1.5 GPM, 0.46 PRECIP/IN

1.5 SR BLACK NOZZLE

FULL CIRCLE

HUNTER: I-20-06-SS-1.5SR

THREE QUARTER

HUNTER: I-20-06-SS-1.5SR

HALF CIRCLE

HUNTER: I-20-06-SS-1.5SR

QUARTER CIRCLE

HUNTER: I-20-06-SS-1.5SR

INDICATES CONTROL VALVE AND STATION NUMBER

INDICATES CONTROL VALVE SIZE

INDICATES GALLONS PER MINUTE

##### EXISTING TREE PROTECTION AREA:

TREE PROTECTION AREA UNDER ANY EXISTING TREE THAT IS TO REMAIN IS DEFINED BY ITS DRIP LINE OR CANOPY COVER. WITHIN THIS AREA NO STORAGE OR PARKING WILL BE PERMITTED. ALL TRENCHING WILL BE PERFORMED BY HAND, DO NOT CUT ROOTS 1" IN DIAMETER OR LARGER. USE BORING PROCEDURES WHEN ENCOUNTERING ROOTS 1" SIZE AND LARGER. NO ROOTS ARE TO BE EXPOSED LONGER THAN 48 HOURS.

##### AUTOMATIC CONTROLLER:

RAINMASTER DXI CENTRAL CONTROL SYSTEM:

CONTROLLER 'A', 'B', 'C'

DXI-FMW-LAGUNA + DXI-PWM48P - 48 STATION CONVENTIONAL

WITH ETHERNET CONNECTION AND PROMAX REMOTE ASSEMBLY

AND ANTENNA

REUSE EXISTING 110V SERVICE

BUDGET 300' OF DATA LINE FROM CONTROLLER B AND C BACK TO THE IDF

THROUGH EXISTING CONDUIT

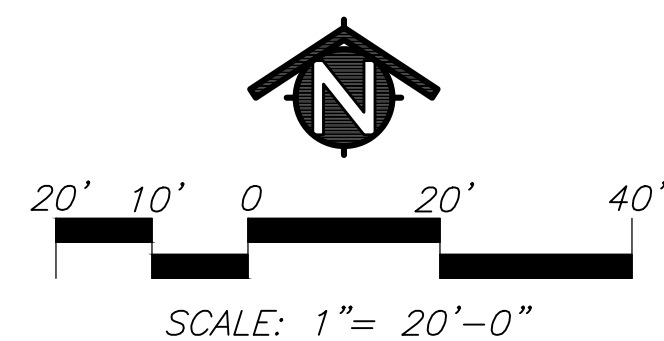
EXTEND WIRE TO THE ROOF AND INSTALL NEW ANTENNAS ON THE ROOF.

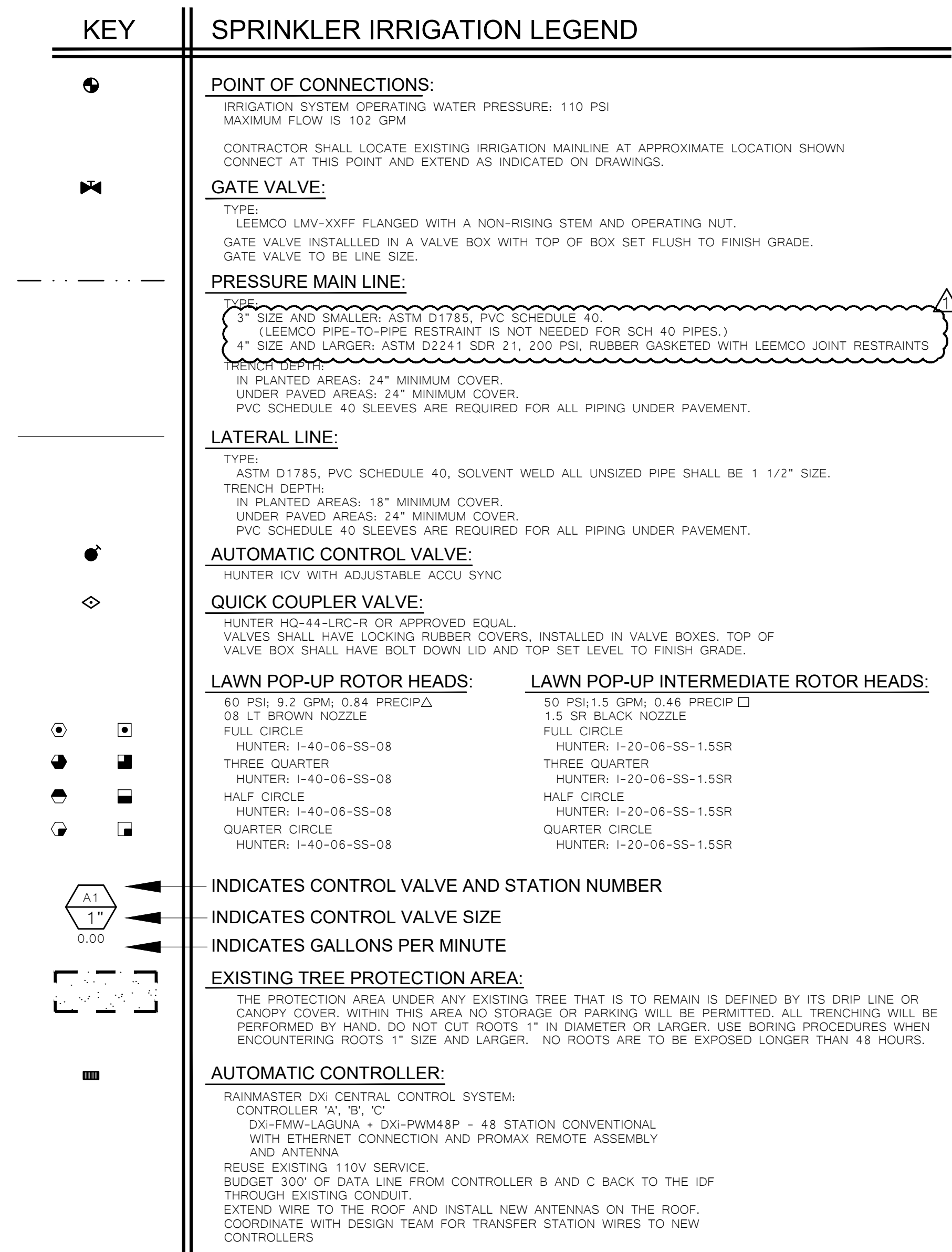
COORDINATE WITH DESIGN TEAM FOR TRANSFER STATION WIRES TO NEW

CONTROLLERS

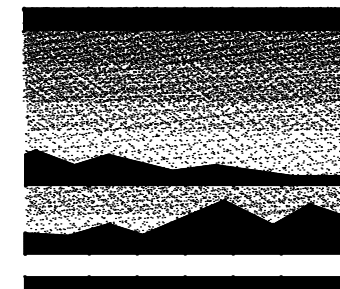
#### SPRINKLER IRRIGATION NOTES

- COMPOSITE BASE SHEET: PROPOSED IMPROVEMENTS SHOWN ON DRAWINGS ARE SUPERIMPOSED ON A COMPOSITE BASE SHEET. THE COMPOSITE BASE SHEET IS A COMPILATION OF ARCHITECTURAL, ENGINEERING, AND OTHER DATA THAT IS PROVIDED. THE LANDSCAPE ARCHITECT SHALL NOT BE HELD LIABLE FOR CHANGES, INACCURACIES, OMISSIONS, OR ERRORS PERTAINING TO THE COMPOSITE BASE SHEET. CONTRACTOR SHALL BE RESPONSIBLE FOR REVIEWING THESE DOCUMENTS. ANY DISCREPANCIES NEED TO BE BROUGHT TO THE ATTENTION OF THE DESIGN TEAM AND RESOLVED PRIOR TO CONTINUATION OF WORK.
- DESIGN PRESSURE SHOWN ON PLANS HAS BEEN FURNISHED BY WATER COMPANY OR WATER DISTRICT SERVING SITE. VERIFY PRESSURE ON-SITE PRIOR TO THE INSTALLATION OF ANY SPRINKLER IRRIGATION EQUIPMENT. IF THERE IS A DISCREPANCY, NOTIFY OWNER'S REPRESENTATIVE IMMEDIATELY IN WRITING SO ADJUSTMENTS CAN BE MADE BY LANDSCAPE ARCHITECT. FAILURE TO REPORT DISCREPANCIES AND CONTINUANCE OF WORK WILL RESULT IN ALL RE-DESIGN COSTS BEING CHARGED TO CONTRACTOR.
- DETERMINE LOCATION OF UNDERGROUND UTILITIES. DAMAGE CAUSED BY INSTALLATION OF THIS WORK SHALL BE REPAIRED TO SATISFACTION OF GOVERNING AGENCY OR OWNER AT NO ADDITIONAL COST TO THE CONTRACT.
- SPRINKLER OVER SPRAY SHALL NOT BE ALLOWED ON PUBLIC SIDEWALKS, BUILDING WALLS OR FENCES. MINIMUM OVERSPRAY MAY OCCUR IN PARKING AREAS. USE ADJUSTABLE NOZZLES WHENEVER POSSIBLE TO CONTROL SPRINKLER OVERSPRAY.
- ALL LOCAL CODES AND ORDINANCES SHALL BE COMPLIED WITH. IF THERE IS A CONFLICT, NOTIFY OWNER'S REPRESENTATIVE IMMEDIATELY.
- TESTING:
  - PRESSURE TEST ALL UNDERGROUND PIPING AS FOLLOWS:
    - SYSTEMS WITH BOOSTER PUMP:
      - MAIN LINE - AT 100 PSI FOR 4 HOURS.
      - LATERAL LINES - AT 100 PSI FOR 2 HOURS.
    - SYSTEMS WITH OUT BOOSTER PUMP:
      - MAIN LINE - AT STATIC PSI FOR 4 HOURS.
      - LATERAL LINES - AT STATIC PSI FOR 2 HOURS.
  - COVERAGE TEST: NOTE: PRIOR TO REQUESTING COVERAGE TEST, INSURE ALL HEADS ARE SET PLUMB, NOZZLES ARE ADJUSTED PROPERLY AND SYSTEM HAS BEEN CHECKED FOR AUTOMATION. REQUEST OWNER'S REPRESENTATIVES PRESENCE ON-SITE WHEN SPRINKLER SYSTEM IS COMPLETELY INSTALLED AND FULLY AUTOMATIC. PROVIDE ADEQUATE PERSONNEL AT THIS MEETING TO ADJUST AND FINE TUNE SYSTEM TO SATISFACTION OF OWNER'S REPRESENTATIVE.
- LAYOUT ALL WORK PRIOR TO TRENCHING OPERATIONS TO DETERMINE IF MINOR MODIFICATIONS OR ADJUSTMENTS WILL BE REQUIRED.
- INSTALL ALL SPRINKLER HEADS PERPENDICULAR TO SLOPES OR GRADE.
- CONTROL WIRE SHALL BE UF-14, COLOR FOR LEAD AND WHITE FOR COMMON. SPLICES SHALL BE PERMITTED AT VALVE BOX LOCATIONS ONLY.
- PROVIDE AND INSTALL AUTOMATIC CONTROLLER AND UF-14 CONTROL WIRE. ELECTRICAL SUBCONTRACTOR SHALL PROVIDE 110V SERVICE AND SERVICE HOOKUP FROM POWER SOURCE TO AUTOMATIC CONTROLLER.
- COORDINATE ALL WORK WITH OTHER TRADES SO PROGRESS OF WORK IS NOT INTERRUPTED AND CAN BE COMPLETED IN A TIMELY MANNER.
- NO PLANTING SHALL BE STARTED UNTIL ALL SPRINKLER WORK HAS BEEN TESTED AND APPROVED IN PRESENCE OF OWNER'S REPRESENTATIVE.
- FOR SPRINKLER IRRIGATION INSTALLATION DETAILS, SEE SHEET NO. L4.1.





1. COMPOSITE BASE SHEET: PROPOSED IMPROVEMENTS SHOWN ON DRAWINGS ARE SUPERIMPOSED ON A COMPOSITE BASE SHEET. THE COMPOSITE BASE SHEET IS A COMPILATION OF ARCHITECTURAL, ENGINEERING, AND OTHER DATA THAT IS PROVIDED. THE LANDSCAPE ARCHITECT SHALL NOT BE RESPONSIBLE FOR DISCREPANCIES, OMISSIONS, OR ERRORS PERTAINING TO THE COMPOSITE BASE SHEET. CONTRACTOR SHALL BE RESPONSIBLE FOR REVIEWING THESE DOCUMENTS. IF ANY DISCREPANCIES NEED TO BE BROUGHT TO THE ATTENTION OF THE DESIGN TEAM AND RESOLVED PRIOR TO CONTINUATION OF WORK.
2. DESIGN PRESSURE SHOWN ON PLANS HAS BEEN FURNISHED BY WATER COMPANY OR WATER DISTRICT SERVING SITE. VERIFY PRESSURE ON-SITE PRIOR TO THE INSTALLATION OF ANY SPRINKLER IRRIGATION EQUIPMENT. IF THERE IS A DISCREPANCY, NOTIFY OWNERS REPRESENTATIVE IMMEDIATELY IN WRITING SO ADJUSTMENTS CAN BE MADE BY LANDSCAPE ARCHITECT. FAILURE TO REPORT DISCREPANCIES AND CONTINUANCE OF WORK WILL RESULT IN ALL RE-DESIGN COSTS BEING CHARGED TO CONTRACTOR.
3. DETERMINE LOCATION OF UNDERGROUND UTILITIES, DAMAGE CAUSED BY INSTALLATION OF THIS WORK SHALL BE REPAIRED TO SATISFACTION OF GOVERNING AGENCY OR OWNER AT NO ADDITIONAL COST TO THE CONTRACT.
4. SPRINKLER OVER SPRAY SHALL NOT BE ALLOWED ON PUBLIC SIDEWALKS, BUILDING WALLS OR FENCES, MINIMUM OVERSPRAY MAY OCCUR IN PARKING AREAS, USE ADJUSTABLE NOZZLES WHENEVER POSSIBLE TO CONTROL SPRINKLER OVERSPRAY.
5. ALL LOCAL CODES AND ORDINANCES SHALL BE COMPLIED WITH. IF THERE IS A CONFLICT, NOTIFY OWNERS REPRESENTATIVE IMMEDIATELY.
6. TESTING:
  - A. PRESSURE TEST ALL UNDERGROUND PIPING AS FOLLOWS:
    - SYSTEMS WITH BOOSTER PUMP:
      - MAIN LINE - AT 100 PSI FOR 4 HOURS.
      - LATERAL LINES - AT 100 PSI FOR 2 HOURS.
    - SYSTEMS WITH OUT BOOSTER PUMP:
      - MAIN LINE - AT STATIC PSI FOR 4 HOURS.
      - LATERAL LINES - AT STATIC PSI FOR 2 HOURS.
  - B. COVERAGE TEST: NOTE: PRIOR TO REQUESTING COVERAGE TEST, INSURE ALL HEADS ARE SET PLUMB, NOZZLES ARE ADJUSTED PERPENDICULAR TO SLOPES OR GRADE. REQUEST OWNERS REPRESENTATIVES PRESENCE ON-SITE WHEN SPRINKLER SYSTEM IS COMPLETELY INSTALLED AND FULLY AUTOMATIC. PROVIDE ADEQUATE PERSONNEL AT THE MEETING TO ADJUST AND FINE TUNE SYSTEM TO SATISFACTION OF OWNER'S REPRESENTATIVE.
7. LAYOUT ALL WORK PRIOR TO TRENCHING OPERATIONS TO DETERMINE IF MINOR MODIFICATIONS OR ADJUSTMENTS WILL BE REQUIRED.
8. INSTALL ALL SPRINKLER HEADS PERPENDICULAR TO SLOPES OR GRADE.
9. CONTROL WIRE SHALL BE UF-14, COLOR FOR LEAD AND WHITE FOR COMMON. ELECTRICAL SHALL BE PERMITTED AT VALVE BOX LOCATIONS ONLY.
10. PROVIDE AND INSTALL AUTOMATIC CONTROLLER AND UF-14 CONTROL WIRE. ELECTRICAL SUBCONTRACTOR SHALL PROVIDE 110V SERVICE AND SERVICE HOOKUP FROM POWER SOURCE TO AUTOMATIC CONTROLLER.
11. COORDINATE ALL WORK WITH OTHER TRADES SO PROGRESS OF WORK IS NOT INTERRUPTED AND CAN BE COMPLETED IN A TIMELY MANNER.
12. NO PLANTING SHALL BE STARTED UNTIL ALL SPRINKLER WORK HAS BEEN TESTED AND APPROVED IN PRESENCE OF OWNERS REPRESENTATIVE.
13. FOR SPRINKLER IRRIGATION INSTALLATION DETAILS, SEE SHEET NO. L4.1.



**MTW** *group*  
LANDSCAPE ARCHITECTURE  
AND PLANNING  
2707 K Street, Suite 201  
Sacramento, CA 95816  
916 369-3990



---

*Peter D. Larimer*

C-5284

The Landscape Architects do not represent that these plans or the specifications in connection therewith are suitable, whether or not modified for any other site than the one for which they were specifically prepared. The Landscape Architects disclaim responsibility for these plans and specifications if they are used in whole or in part at any other site.

## CONSULTANTS

[illegible]

## INITIAL BOX

[illegible]

# HARPER JUNIOR HIGH SCHOOL PLAYFIELD RENOVATIONS

DAVIS JOINT UNIFIED SCHOOL DISTRICT  
DAVIS, CA

DATE	09/12/2
JOB NO.	21-6
SHEET TITLE	

LANDSCAPE  
IRRIGATION PLAN

ADD ALTERNATE # \_\_\_\_\_  
SHEET NO. \_\_\_\_\_

### L3.4

SHEET 19 OF 22 TOTAL